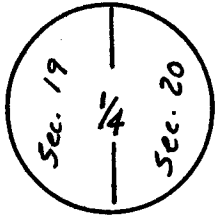


RECEIVED
LARAMIE COUNTY
CHEYENNE, WY.

CERTIFIED LAND CORNER RECORDATION '86 MAY 16 PM 2 32

R-66-W

DESCRIPTION OF CORNER EVIDENCE FOUND, AND ORIGINAL RECORD (If known)

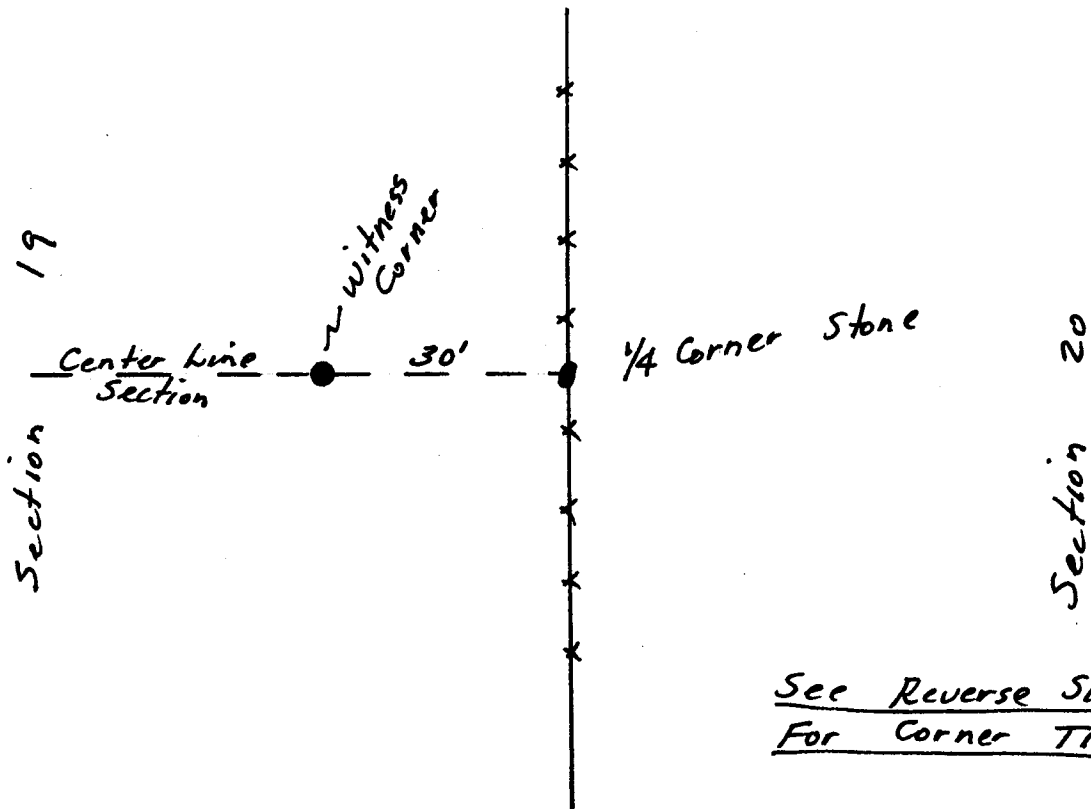


T
16
N
Found Stone generally matching the description of the original monument which is a Limestone 15" x 10" x 5". Mark on West Face not well defined. Located in North South Fence

DESCRIPTION OF MONUMENT AND ACCESSORIES ESTABLISHED TO PERPETUATE THE ORIGINAL LOCATION OF THIS CORNER:

Set a 5/8" x 24" Rebar with Aluminum I-D. Cap. as Witness Corner 30' West on Center line of Section

SKETCH, WITH COURSE AND DISTANCE TO ADJACENT CORNER IF DETERMINED IN THIS SURVEY. (May Sketch or Paste Reproduction on Reverse Side.)



I, Edward C. Fry certify that I have carefully performed or reviewed the work done on the diagrammed corner as reported on this recordation form and approve the same.

Edward C. Fry 4-23-86 P.E.-U.S. 662
Signature of Surveyor Registration No.

STATE OF WYOMING,

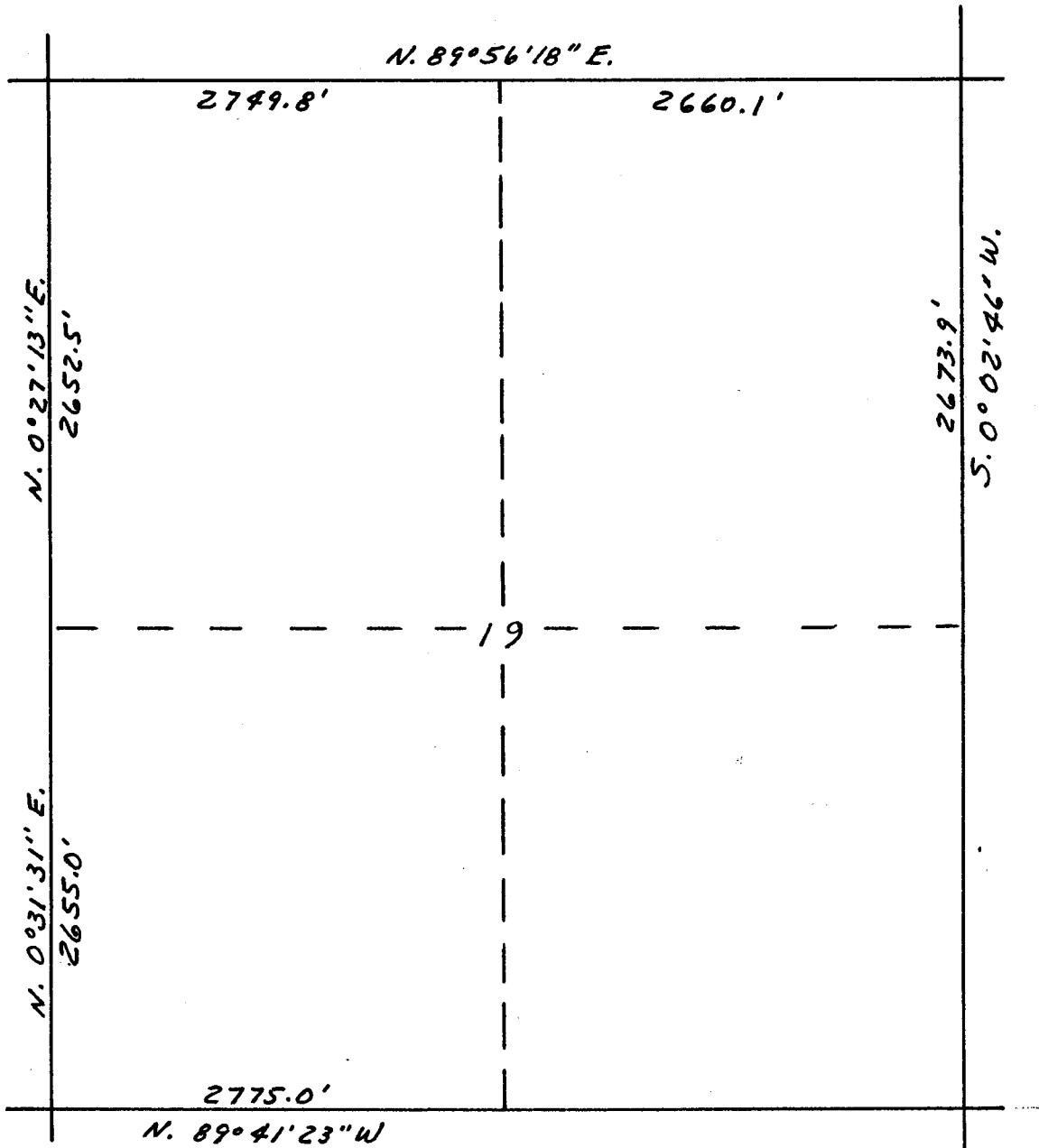
Office of Clerk and Recorder,

County of Laramie

This "corner record" was filed for record on the 16 day of May, 1986, was noted on the cross-index plat and is assigned page No. _____, in book No. _____.

Janet C. Whitcomb
County Official
Cross Index No. P-5 T. 16 R. 166 Mer.
____ T. _____ R. _____ Mer.
____ T. _____ R. _____ Mer.
____ T. _____ R. _____ Mer.
____ T. _____ R. _____ Mer.
____ T. _____ R. _____ Mer.
____ T. _____ R. _____ Mer.

R-66-W



T
16
N

